

## RHIZOCTONIA

By Andrew Wherrett  
Department of Agriculture and Food, Western Australia

### Background

*Rhizoctonia* is a disease affecting a wide range of crops and has become more prevalent throughout Western Australia in recent years following the introduction of minimum tillage practices. The previous practice of tillage prior to seeding encouraged the breakdown of the fungus (*Rhizoctonia solani* Kuhn) in the soil prior to emergence. Minimum tillage practices decrease the rate of organic matter breakdown, thereby providing a habitat for *Rhizoctonia* over summer. The disease affects most major crops to varying degrees, with barley being most susceptible and oat crops are least susceptible. Bare patch and root rot of cereals, and damping off and hypocotyl rot of oilseed and legumes are all caused by differing strains of *R. solani*.

### Pathogen Survival and Infection

*Rhizoctonia solani* survives best in organic matter just below the surface of an undisturbed soil. The pathogen benefits from summer rainfall events by infecting and multiplying on weeds, and has a minimal ability to survive on the residue of previous seasons crops.

The break of season initiates the development of the fungus in soil, thereby priming itself for infection of germinating seeds. Infection by the pathogen is encouraged by factors that restrict root growth, such as low soil fertility and sulfonylurea herbicides. If there is a delay between the season break and seeding, it is imperative that weeds are controlled to minimise proliferation of the fungus. Good nitrogen nutrition helps to minimise the effects of the disease; bare patches are smaller and less severe.

In general, *Rhizoctonia* is most likely to be a severe problem where the plant is under stress from factors other than the disease, e.g. Low rainfall, poor nutrition.

### Symptoms

#### Bare Patch (Cereals)

The characteristic symptom of *Rhizoctonia* is clearly defined bare patches in the crop. The reason these patches are clearly defined relates to the susceptibility of young seedlings, and the placement of the fungus within the soil profile. *Rhizoctonia solani* tends to reside in the upper layers of soil but not in the surface and only infects seedlings through the root tip soon after germination. Older plants have a more developed root epidermis that does not allow the penetration of hyphae into the root. For this reason, once the crop is fully established, plants have either perished due to seedling infection or reasonably healthy. Some yield loss may be associated with plants on the margins of the bare patch.

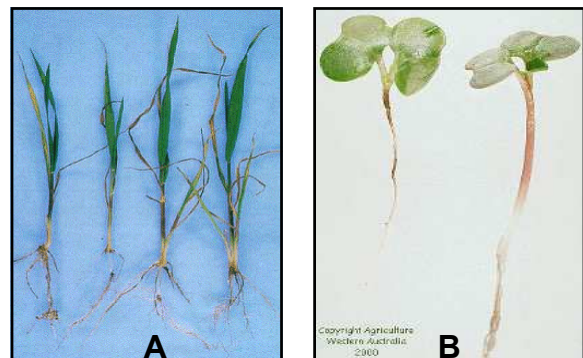


**Figure 1:** *Rhizoctonia* bare patch in a wheat crop (from MacNish, 2005).

Roots of a plant infected with *R. solani* will typically be shortened with a brown 'spear tip' where they have rotted (MacNish, 2005). Plants within a patch remain stunted with stiff, rolled leaves and can be darker green than those outside the patch (MacNish, 2005).

#### Damping Off and Hypocotyl Rot (Oilseeds)

Caused by *Rhizoctonia solani* ZG5 and ZG1-1, are particularly infectious on canola (Barbetti and Khangura, 2005). As with cereals damping off and hypocotyl rot are expressed as bare patches in the emerging crop. Closer inspection of seedlings show a brown discolouration of the hypocotyl and or 'spear tips' (Figure 2).



**Figure 2:** Seedling of wheat (A) and canola (B) infected with *R. solani*. Note brown discolouration of infected root tissues and evidence of 'spear tips'. Photo's courtesy DAFWA.

## RHIZOCTONIA

### Factors Affecting Rhizoctonia

There are certain soil conditions that favour *Rhizoctonia* development during and after seeding.

#### Soil Nutrition

The disease is most common in soils of poor fertility (Anon, 2006). Crops with access to sufficient nutrients for growth have a better ability to “get ahead” *Rhizoctonia* infections.

#### Soil Disturbance

*Rhizoctonia* is sensitive to cultivation, with cultivation after rain and before sowing most effective at reducing infection. Disturbing the soil does not allow the fungus to “prime” itself for infection of the emerging crop.

#### Soil Moisture

Under moisture stress the crop becomes more susceptible to *R. solani* infection and has a decreased ability to “get ahead” of the disease.

#### Weeds

Poor weed management following late summer and early autumn rain allows *Rhizoctonia* to infect grass weeds, thereby allowing the fungus to multiply in preparation for the crop.

#### Herbicides

Sulfonylurea herbicides can sometimes worsen *Rhizoctonia*, and this is attributed to minor herbicidal effects on the crop.

### Control

Where reduced tillage is practiced, *Rhizoctonia* bare patch is best controlled through effective management of weeds and maintaining adequate nutrition for the establishing crop. Spraying weeds with a fast acting knock down herbicide will minimise the development of the fungus in the ground prior to seeding, and good nutrition allows gives the crop a better chances of “getting ahead” of the disease. Best tillage practices involve deep cultivation and shallow sowing, with minimal time between each event.

In the past, tillage was the most effective method of reducing the impact of *Rhizoctonia*. The establishment of *R. solani* in the topsoil late in autumn was negated as cultivation broke the network of fungal hyphae. The fungus did not have time to recover before seedling establishment. In severely infected paddocks, cultivation may be an important management strategy. Control of the *Rhizoctonia* through fungicide application is not feasible and no resistant crop varieties are available. In areas where the disease is known or suspected it is best practice to clean knife points once the seeding is complete, thereby eliminating movement of the fungus from one paddock to the next. In general, maintaining adequate nutrition (especially N) during crop establishment is the best way to reduce the chance of *R. solani* infection.

### Points to Consider

- *Rhizoctonia* is most evident as **bare patches** in a young crop. Close inspection of infected seedlings shows brown discolouration or rotting of the roots and evidence of “**spear tips**”.
- Adequate nutrition during crop emergence gives the crop better chance of “**getting ahead**” of the disease. Fast growing roots will push past the infected topsoil before *Rhizoctonia* infects the root tip.
- Poor weed management prior to seeding allows *R. solani* to “**prime**” itself for infection of the upcoming crop.
- In severe paddock infections cultivation following late summer - early autumn rains can help to reduce infection by the fungus.

### References

- Anonymous (2006) Barley root disease: take-all, *Rhizoctonia*, root lesion nematode. Department of Agriculture and Food, Western Australia.
- Barbetti, M and Khangura, R. (2005) Fungal diseases of canola on Western Australia. *Bulletin 4406a*, Department of Agriculture and Food, Western Australia.
- MacNish, G. (2005) Rhizoctonia bare patch and Rhizoctonia root rot of cereals. *Farmnote 34/1994 (reviewed July 2005)*, Department of Agriculture and Food, Western Australia.